

# MKS® Osteo

## Spinal orthosis

### Sizes



This product is available in pediatric sizes.

### Indications

- Stable, osteoporotic and traumatic vertebral fractures
- Pain caused by poor posture, e.g. rounded shoulders
- Spondylitis
- Tumor
- Condition after intervertebral disc surgery
- Muscle insufficiency
- Spondylodiscitis
- Abdominal muscle insufficiency
- Sintered vertebral fractures in osteoporosis
- Osteoporosis
- Poor posture
- Hollow round back
- Chronic lumbago caused by hyperlordosis
- Facet syndrome
- Degenerative changes in the lumbar spine

### Features

- Semi-elastic bandaging material
- Lateral reinforcing stays
- Firm abdominal piece with hook and loop fastener
- Adjustable back plate with incorporated aluminium profile
- Individual strap course
- Reclination straps



### Mode of Operation

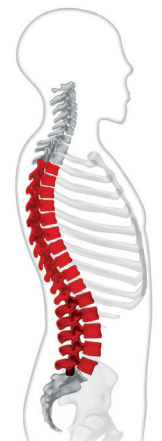
The MKS® Osteo functions according to the reclination principle.

The two shoulder straps attached to the back plate straighten the vertebral column to relieve the thoracic spine.

The wide lumbar bandage straightens and hence relieves the lumbar vertebral column. The reclination straps are attached to the lumbar bandage through additional lateral straps. Hereby rotation is limited and stabilisation is ensured.

### Size chart and article numbers

Size	Body circumference	Art.-No.	Art.-No.	Art.-No.
		Abdominal height / Height of back piece Reclination	Abdominal height / Height of back piece Reclination	Abdominal height / Height of back piece Reclination
		18 cm / S (46 cm)	18 cm / M (50 cm)	18 cm / L (56 cm)
1	60 - 70 cm	782C-1	782A-1	782B-1
2	70 - 80 cm	782C-2	782A-2	782B-2
3	80 - 90 cm	782C-3	782A-3	782B-3
4	90 - 105 cm	782C-4	782A-4	782B-4
5	105 - 120 cm	782C-5	782A-5	782B-5
6	120 - 135 cm	782C-6	782A-6	782B-6



T3 - L5



## Modules for the modular assembly

Name	Included as standard in the products Art.-No. 782...																		Art.-No.
	C1	A1	B1	C2	A2	B2	C3	A3	B3	C4	A4	B4	C5	A5	B5	C6	A6	B6	
MKS® Osteo Dorsal plate with reclination straps (S 46 cm)	•			•			•			•			•			•			761-066-S
MKS® Osteo Dorsal plate with reclination straps (M 50 cm)		•			•			•			•			•				•	761-067-S
MKS® Osteo Dorsal plate with reclination straps (L 56 cm)			•			•			•			•			•			•	761-068-S
MKS® Body belt size 1 60 - 70 cm	•	•	•																582-001-S
MKS® Body belt size 2 70 - 80 cm				•	•	•													582-002-S
MKS® Body belt size 3 80 - 90 cm							•	•	•										582-003-S
MKS® Body belt size 4 90 - 105 cm										•	•	•							582-004-S
MKS® Body belt size 5 105 - 120 cm													•	•	•				582-005-S
MKS® Body belt size 6 120 - 135 cm																•	•	•	582-006-S



